

Women's, Gender, and Sexuality Studies Newsletter

A Message from the Director...



Dear Colleagues, Students, and Friends of WGSS,

I hope you all had fun and productive summers, and managed to keep hope alive in the midst of an ever more alarming political climate.

I sadly bid goodbye to my sabbatical, where I spent most of my time in New York and Madrid. But I'm happy to be back with the fabulous WGSS community and look forward to another productive year. First, a big feminist tip of the hat to Prof. Laura Green for serving as acting director while I was gallivanting (I mean writing my new book) around the globe. Laura not only kept the program running smoothly but managed to make all sorts of improvements and launch new initiatives. Brava sister!

IN THIS ISSUE

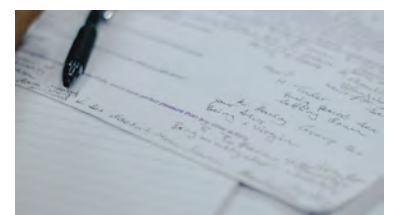
Spring Events Summary	2
Upcoming Events	3
Program News	4-5
Visiting Scholars	6
<i>Signs</i>	7
WGSS Course Offerings	8

WGSS is off to its usual exciting start with three new visiting scholars this year: Zahra Lotfi, Anna Piela, and Lauren Wilwerding. Read more about these scholars and their work on page 6. We have a number of new recruits to the gender studies team this year: we welcome four new feminist faculty to the WGSS executive committee (see who they are on page 5). We also have some big feminist shout-outs to two of our E-Committee members who received tenure and promotion this year: Sarah Jackson and Brooke Foucault Welles (both Communications Studies). Congratulations to both of you! For more good news for feminist faculty, see page 4!

I'm also thrilled to announce that Northeastern will continue to be the home of *Signs: Journal of Women in Culture and Society* for a second term! I am so excited to continue to work with Carla Kaplan and the rest of the *Signs* team for an additional five years. We will hold a reception for graduate students on September 26 at 7:00 pm (see page 3 for details) to learn more about opportunities to work for *Signs* while it is here at Northeastern.

As many of you know, our signature event in WGSS is our annual women's history month Symposium. This year, with generous grant funding from the Global Resilience Institute, our theme will be "Gender and Global Resilience" (see page 3 for details). Our Collaborative Research Cluster (CRC) this year will also be on that theme (see page 5 for how to get involved).

Message from the Director continued on page 5.



Spring 2018 Events Recap

WGSS Visiting Scholar Lunchtime Lecture Series



This past January, WGSS Visiting Scholar Megan Prince Goodwin gave a talk titled “Threatening Whiteness: Islam’s Challenge to American White Supremacy.” Her talk explored how laws originally intended to expand religious freedom and protect minority communities are now being used to preserve white mainstream Christian privilege. Her project also considered how contemporary American whiteness is threatened by Islam and Muslims—in particular, Muslims of color. The presentation was part of the WGSS Visiting Scholar Lunchtime Lecture series and was given to a standing room only crowd in the Curry Student Center. The Lunchtime Lecture series will continue in AY 2018-2019 with lectures from our incoming visiting scholars. Look at our website or check out page 3 for more information.

WGSS Annual Symposium: Gender and the Rise of the Global Right

On March 23, WGSS hosted its fifth annual Women’s History Month Symposium, “Gender and the Rise of the Global Right.” The event was held in the state-of-the-art Interdisciplinary Sciences & Engineering Complex, and hosted a dozen panelists from all corners of the United States, as well as several visiting academics from abroad.

We were honored to have Susan B. Church (Demissie & Church), Josen Masangkay Diaz (University of San Diego), Fatema Ahmed (Muslim Justice League), Kevin Moss (Middlebury College), Rupal Oza (Hunter College, CUNY), Serena Parekh (Northeastern University), L. Cole Parke (Political Research Associates), Elizabeth Swanson (Babson College), and Elizabeth A. Wood (MIT), as well as Helena Alviar Garcia from Harvard Law School and the Universidad de Los Andes, Mieke Verloo (Raboud University, Netherlands), and Betul Eksi from Turkey, currently teaching as a postdoctoral fellow at Northeastern University. Panels throughout the day addressed Authoritarianism & Gender, Gendered Violence & Displacement, and Governmentality & Gender.

Over the course of the day, we welcomed more than 100 guests to the Symposium, from all over Northeastern and far beyond. We’d like to thank our co-sponsors, the Northeastern School of Law; the College of Social Sciences and Humanities; the Northeastern Ethics Institute; Cultures, Societies and Global Studies; Sociology and Anthropology; and *Signs: Journal of Women in Culture and Society*.

Be sure to check out the sixth annual Women’s History Month Symposium, “Gender and Resilience” on March 15th, 2019 in the Cabral Center!



Upcoming Events



WEDNESDAY, SEPTEMBER 26, 7:00 PM - 8:30 PM

FALL WELCOME RECEPTION FOR GRADUATE STUDENTS

270 Holmes Hall

Drop in to meet and mingle with graduate students and faculty in the WGSS program and the editorial team of *Signs: Journal of Women in Culture in Society* while learning about exciting opportunities for graduate students at Northeastern, including research assistantships with the journal and its editors and the graduate certificate in WGSS.

WEDNESDAY, OCTOBER 3, 12:00 PM - 1:00 PM

VISITING SCHOLAR LUNCHTIME LECTURE WITH LAUREN WILWERDING, "OLD MAIDS TO SINGLE WOMEN": CULTURE, RHETORIC, PLOT

Curry Student Center, 344

When did the old maid become the single woman? And why does it matter? While the fact that single women outnumber married in the US seems strikingly modern, this contemporary demographic fact is rooted in the seemingly unremarkable nineteenth-century old maid. As Victorians worked out the roles appropriate to a large population of single women in journalism, conduct books, and life writing, a specific plot emerged for unmarried women focused on the choice to pursue meaningful work over marriage in literature. Moreover, this plot and its rhetoric are still at work in conversations about singleness and female labor. Lunch will be served! All are welcome.



MONDAY, OCTOBER 29, 12:00 PM - 1:00PM

VISITING SCHOLAR LUNCHTIME LECTURE WITH ANNA PIELA

Curry Student Center, 346

Visiting Scholar Anna Piella will present a talk on her current research. Lunch will be served. Check our website for updates.

SPRING 2019, DATE AND TIME TBD

VISITING SCHOLAR LUNCHTIME LECTURE WITH ZAHRA LOTFI

Location TBD

Visiting Scholar Zahra Lotfi will present a talk on her current research. Lunch will be served. Check our website for updates.



FRIDAY, MARCH 15, 9:00 - 5:00 PM

2019 WGSS SYMPOSIUM: GENDER AND RESILIENCE

Cabral Center

Save the date for the next annual WGSS symposium on March 15th, 2019! Each March, the WGSS program celebrates Women's History Month with a day-long symposium focusing on one central theme and featuring panels of speakers in dialogue with one another and their audience. This year's theme is Gender and Resilience.

Program News

Libby Adler Publishes a New Book



WGSS Executive Committee and faculty member Professor Libby Adler has a new book out, titled *Gay Priori: A Queer Critical Legal Studies Approach to Law Reform* (Duke University Press, 2018). *Gay Priori* offers a comprehensive critique of the mainstream LGBT legal agenda in the United States, showing how LGBT equal rights discourse drives legal advocates toward a narrow array of reform objectives that do little to improve the lives of the most marginalized members of the LGBT community. It goes on to offer an alternative vision that emphasizes the distribution of health, safety, jobs, housing, nutrition, and income. Find it in bookstores or online at <https://www.dukeupress.edu/gay-priori>.

Congratulations, Professor Adler!

WGSS Members and Affiliates Selected as 2018-19 Humanities Center Fellows

Congratulations to the six WGSS members and affiliates selected as 2018-2019 Humanities Center Fellows! Faculty member Moya Bailey; Executive Committee member Laura Frader; affiliated faculty members Linda Blum, Beth Britt, and Meryl Alper; and graduate student/WGSS lecturer Bridget Keown will be pursuing research around the theme “Cultures of Ability.” Together, they make up six of the ten selected fellows. WGSS affiliated faculty member Sari Altschuler will be facilitating the fellowship.

Read more about the fellowship, as well as each fellow’s upcoming work at <https://www.northeastern.edu/cssh/humanities/resident-fellowship-program/current-fellows/>. Kudos to all!

Introducing WGSS Wendesdays

WGSS will be featuring a student spotlight the second Wednesday of each month. The monthly feature will celebrate WGSS students from all over the University, and showcase the work done in WGSS courses, as well as the fascinating students engaged in this work. Contact wgss@northeastern.edu if you’re interested in being a part of the series or have a student you think would be a good fit.

Intro to WGSS Studies Releases Spring 2018 ‘zine

Dr. Moya Bailey’s Spring 2018 class of Intro to Women’s, Gender, and Sexuality Studies students created a zine that’s now available online! Check out the culmination of their work, *Sexpectations*, available at https://issuu.com/moyabailey/docs/wgss_magazine_spring_2018.

Since Fall of 2014, each Intro to Women’s, Gender, and Sexuality Studies class has produced a ‘zine as a final class project. Students are responsible for content and design elements and work in teams to achieve the final product together under the supervision of their instructor. This project was started by Assistant Professor of WGSS and Cultures, Societies, and Global Studies, Moya Bailey, when she joined the WGSS team in 2014 as the Dean’s Scholar and Postdoctoral Fellow in WGSS and Digital Humanities.

Program News

WGSS Welcomes New Executive Committee Members



Margot Abels
WGSS, Human
Services, Sociology



Hillary Chute
English,
Art + Design



Eunsong Kim
English



Dani Snyder-Young
Theatre

Message from the Director, continued

Citizens: it is now less than three months until the midterm elections. There are record numbers of women running, and we have an opportunity to reject the anti-woman, anti-immigrant, and white supremacist agendas and politicians that target women and sexual minorities of all races, ethnicities, and nationalities. If you are eligible, please make sure you are registered and use your vote! If you have any questions about your eligibility, many campus organizations can help, such as NU College Democrats, NU College Republicans, and Generation Citizen. Student groups such as the Feminist Student Organization (FSO) and NU Pride, along with many others, can help keep you informed about pressing issues for our communities. Please use your voice and your vote to keep moving us forward—and remember to tell your friends and colleagues about opportunities for learning and teaching in the WGSS program.

In solidarity and resistance,
Suzanna Walters
Professor and Director, WGSS Program



Collaborative Research Cluster

WGSS is proud to announce that the Humanities Center has funded a Collaborative Research Cluster (CRC) on the theme of Gender and Resilience. CRCs are interdisciplinary groups that bring together scholars and practitioners from different disciplines around a common issue of humanistic significance. This cluster will focus on the phenomenon of networked social movements and community resilience, examining gender in resilience and how women (and in particular women of color) are consistently leaders in these spaces. The group will look at movements including Black Lives Matter and #MeToo and will center gender in resilience studies, culminating in a symposium in March. The group will meet once a month and participants from any discipline are welcome. Participants may be faculty, staff, or graduate students. If you are interested in joining this group, contact program coordinator Kiki Samko (k.samko@northeastern.edu).

Visiting Scholars

WGSS Welcomes 2018-2019 Visiting Scholars

WGSS welcomes three visiting scholars for the 2018-2019 academic year. WGSS annually offers research associate positions to scholars researching issues related to women, gender, and/or sexuality in the humanities and social sciences. Visiting scholars work on their related projects while in residence for the semester or academic year at Northeastern University. Read about this year's visiting scholars below, and be sure to check our website for information regarding their presentations as part of the Visiting Scholar Lunchtime Lecture Series.

Zahra Lotfi

Zahra Lotfi holds a PhD from Shahid Beheshti University in Tehran, Iran in History of Iran in the Islamic Era. Noticing an absence of women's voices and presence in historical resources, and dealing daily with women's issues while writing her thesis in Afghanistan, Lotfi turned to the field of women's studies: "I felt that the field of women's studies could improve and promote the viewpoints, thoughts, and function of women activists as they defend women's rights in Afghanistan," Lotfi says. After observing the prevalence of honor violence in Afghanistan in society and seeing videos of it on social networks, Zahra decided to focus her work on this critical issue, particularly on the disproportionate impact this cultural practice has on women. Zahra looks forward to sharing her work while at Northeastern with other scholars in the field.



Anna Piela



Anna holds a PhD Major in Women's Studies and a PhD Minor in Islamic Studies from the University of York in the UK. Her research focuses on the intersection of gender, Islam, and the media. She examines how the media represents gender relations in Islam, as well as how online forums construct and debate them. She is especially interested in exploring online discussion groups, where she can map and trace Islamic women's arguments onto different interpretations of Islamic texts. Her monograph, *Muslim Women Online: Faith and Identity in the Virtual World*, demonstrates how the quest to better understand their religion has led Muslim women to speak with each other across political, sectarian, racial, and economic divides. Anna will be building on her research during her time at Northeastern to complete a manuscript entitled *Wearing the Niqab*. She hopes that her work will present an alternative voice in the public debate about the niqab.

Lauren Wilwerding

Lauren Wilwerding holds a PhD in English from Boston College. While her focus is English, Lauren constantly incorporates women's and gender studies into her work, because she sees the two as inherently related to each other. While at Boston College she wrote and defended her dissertation, "Singular Plots: Female Vocation and Radical Form in the Nineteenth-Century Novel." Lauren noticed that female characters in nineteenth-century British novels needed to make decisions between home and work, which often paralleled challenges that women face today. In Lauren's research, the single woman emerges as a figure with uniquely and instructively particular relations to gender, marriage, work, and the form of the novel itself. As she develops "Singular Plots" into a book, she aims to ground its relevance in the present moment with all of its opportunities and challenges of feminism.



Signs

Signs Welcomes New Graduate Students

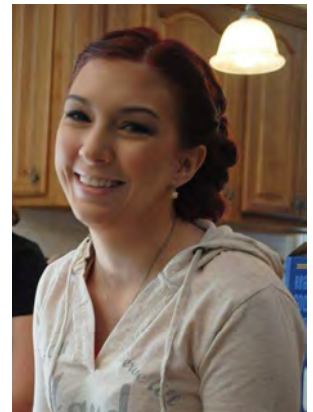
Madelyn Glasco

Madelyn Rose Glasco is a second-year PhD student in the Sociology program. During her undergraduate career at Seattle University, Madelyn became interested in gender and feminist studies after taking a medieval history course taught from a feminist perspective where she critically examined how gender roles evolved in medieval Europe. Women she considers her feminist icons include queer, feminist author Roxane Gay and Dr. Theresa Earenfight – feminist, medievalist, and a ceaseless advocate for her students. As a medieval history enthusiast herself, Madelyn's favorite travel spot is Scotland.



Abbie Levesque

Abbie Levesque is a PhD student in English. Her current research topics are new media, digital humanities, feminist and queer theory, and rhetoric and composition. Her interest in gender studies as an academic topic began when she read Donna Haraway's "A Cyborg Manifesto" in her first MA class at Northeastern after her undergraduate career at Lesley University. However, she's been interested in feminist and LGBTQ activism since high school. Her feminist icons are the Guerilla Girls and the many fabulous feminist women in her department. Past research has included work with LGBTQ writing center tutors, and part of her current work is on queer text encoding for qualitative research. In addition, she's interested in the intersections between gender studies and humor theory.



Marhabo Saparova

Marhabo Saparova is a PhD student in Sociology and Anthropology at Northeastern University with research interests in transnational feminism, globalization studies, urban sociology, and migration. Feminist literary works, such as the inspiring poems of Maya Angelou and Audre Lorde and the novels of Toni Morrison, sparked her initial interest in gender-based inequalities during her undergraduate studies in the English Literature Department at Selcuk University in Turkey. Prior to beginning her doctoral studies at Northeastern, Marhabo worked in diverse fields such as social services to different groups of refugees and asylum seekers, political advocacy around immigration issues, and awareness-raising campaigns. Her current research draws on an ethnographic case study of Central Asian migrant domestic workers in Turkey to examine the gendered practices and politics of transnational migration and global care work.



Signs and WGGGS Welcome New Co-op Student Isabella Viega

Isabella Viega is a fourth-year undergraduate student studying English; Art History; and Women's, Gender, and Sexuality Studies. They enjoy gothic Victorian and modernist literature, early medieval art, *Buffy*, and feminist and queer theory. They have organized with various on-campus activist groups, including the Progressive Student Alliance, NU SHARE, and Huskies Organizing with Labor.



WGSS Course Offerings

Fall 2018 Courses

WGSS and Cross-Listed Courses

WMNS 1103: Intro to WGSS; Professor Moya Bailey

WMNS/POLS/SOCL 3100: Gender, Social Justice, and Transnational Activism; Professor Ivana Isailovic

ANTH/WMNS 2302: Gender and Sexuality: a Cross-Cultural Perspective; Professor Carie Hersh

ENGL/JWSS/WMNS 3678: Bedrooms and Battlefields: Hebrew Bible and the Origins of Sex, Gender, and Ethnicity; Professor Lori Lefkowitz

CINE/WMNS 3392: Gender and Film; Professor Miriam Tola

COMM/WMNS 2304: Communication and Gender; Professors Donica C. O'Malley, Deya Roy, and Darcy K. Searles

CRIM/WMNS 4010: Gender, Crime, and Justice; Professor Ekaterina Botchkovar

HUSV/WMNS 2800: Sexual Orientation and Gender Expression in Practice and Policy; Professor Margot Abels

HUSV/WMNS 3580: Rape Crisis Training and Counseling; Professor Stephanie M. Decandia

PHIL/WMNS 1271: Sex in Islam, Judaism, and Christianity; Professor Megan Goodwin

SOCL/WMNS 1255: Sociology of the Family; Professor Linda Blum

SOCL/WMNS 1260: Gender in a Changing Society; Professor Kathrin Zippel

THTR/WMNS 3200: Queer Theatre and Performance; Professor Scott Edmiston

Affiliated Electives

CINE 3500: Film Theory; Professor Nathan Blake

COMM 1131: Sex, Relationships, and Communication; Professor Joseph Schwartz

NRSNG 3302: Nursing Women and Families; Professor Carol Femia

Spring 2019 Courses



WMNS 1103
Intro to WGSS
Prof. Margot Abels



WMNS/SOCL/HIST 1350
Feminist Resistance
Prof. Suzanna Walters



WMNS/HIST/SOCL 2303
Gender & Reproductive Justice
Prof. Margot Abels



WMNS/HIST 2373
Gender & Sexuality in World History
Prof. Laura Frader



WMNS/PHIL/POLS 3500
Gender, Sexuality, and the Law
Prof. Libby Adler



WMNS 4994
Intern for Credit with *Boston Pride Guide*



WMNS 7900 01
Gender and Food
Taught at the GCWS



WMNS 7900 02
Gendering US Immigration
Taught at the GCWS

Crosslisted Courses

AFRS/WMNS 1185
Gender and the African Diaspora
Professor Moya Bailey

CINE/WMNS 3392
Gender and Film
Professor Miriam Tola

COMM/WMNS 2304
Communication & Gender
Professors Deya Roy, Donica O'Malley, Darcy Searles

CRIM/WMNS 4010
Gender, Crime, and Justice
Professor Chelsea Farrell

ENGL/WMNS 2451
Post-Colonialism
Professor Nicole Aljoe

HUSV/WMNS 2800
Sexual Orientation & Gender Expression in Public Policy
Professor Margot Abels

HUSV/WMNS 3580
Sexual Violence: Counseling
Professor Stephanie Decandia

WMNS/SOCL 1260
Gender in a Changing Society
Professor TBD