

WOMEN'S, GENDER, & SEXUALITY STUDIES NEWSLETTER

Fall 2016

A message from the Director...



Dear Friend of WGSS –

I hope you all had fun and productive summers, and managed to keep “Trump-xiety” at bay...

Our WGSS program continues to grow in exciting ways. We have loads of programming planned for this year – check out this newsletter and our website (northeastern.edu/wgss) for details. And the continuing presence of the journal *Signs* only adds to the richness of the feminist community here at Northeastern. We have an exciting year ahead of us – made even more so by (drumroll please) the addition of Prof. **Moya Bailey** to our

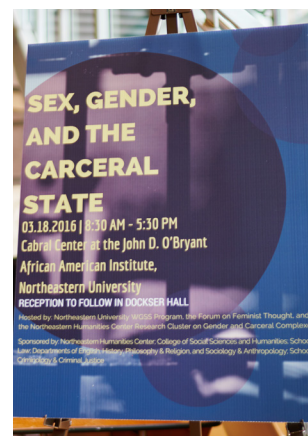
permanent faculty, jointly appointed with the Department of Cultures, Societies, and Global Studies. As most of you know, Moya has been here for the past two years as the (first in the nation!) post-doctoral fellow in WGSS and Digital Humanities. She has made herself invaluable and we are so thrilled to have her in a permanent, tenure-track position. Welcome Moya!

On that note: A tip of the feminist hat to Moya for helping to enrich our curriculum and engage new undergrads. Our minor just keeps getting bigger: we now have nearly 90 undergraduates enrolled! We’ve got some terrific new courses coming up this year (check them out on pages 5-6) and are offering more cross-listed courses than ever. It’s clear that WGSS continues to offer the most interdisciplinary and intersectional curriculum at Northeastern.

This fall, we welcome three visiting scholars (full info can be found on page 4 of this newsletter): **Leanne Trapedo Sims**, **Erinn Cunniff Gilson**, and **Rachel Brown**. Please join me in welcoming our new colleagues! We’ve also got some great new additions to our Executive Committee. Welcome to **Kathrin Zippel** (Sociology), **Alisa Lincoln** (Sociology and Bouvé), **Sara Minard** (DMSB), and **Gloria Sutton** (CAMD). We have a phenomenally interdisciplinary E-Committee, representing a wide range of research, teaching, and departmental affiliations.

Please check out our full newsletter and stay tuned for announcements of events. And...vote. Vote. Vote.

Suzanna Danuta Walters
Professor and Director, WGSS Program
Editor-in-Chief, *Signs: Journal of Women in Culture and Society*



IN THIS ISSUE

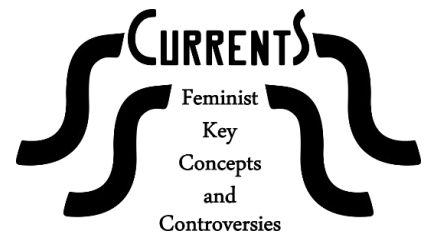
<i>Signs</i> at NEU	2
Annual Symposium	3
New Faces	4
Courses	5-6
Events	7

Spring 2016 marked the end of *Signs*'s first year at Northeastern University. Since moving to its new home in January 2015, Editor-in-Chief **Suzanna Walters** and Chair of the Board of Associate Editors **Carla Kaplan** have implemented new initiatives for the journal, including the **Feminist Public Intellectuals Project**, a three-fold open source project consisting of **Short Takes: Provocations on Public Feminism**, **Ask a Feminist**, and **Currents: Feminist Key Concepts and Controversies**. Since its inception, **Short Takes** has taken on books by Roxane Gay, Katha Pollitt, Anne-Marie Slaughter, Gloria Steinem, Irin Carmon and Shana Knizhnik, and Rebecca Traister. **Ask a Feminist** has featured Suzanna Walters in conversation with Susan Carroll regarding gender and electoral politics and **Sarah Jackson** in dialogue with Cathy Cohen on the Black Lives Matter movement. **Currents** has engaged with the topics of trigger warnings and affirmative consent. For more about the project, visit signsjournal.org/feminist-public-intellectuals-project/.



Signs Special Issue: "Pleasure and Danger: Sexual Freedom and Feminism in the Twenty-First Century"

Northeastern's first special issue of *Signs*, "**Pleasure and Danger: Sexual Freedom and Feminism in the Twenty-First Century**" will be the journal's Autumn 2016 issue. It will feature an article by **Erinn Cunniff Gilson**, who will be a visiting scholar in WGSS during the 2016-2017 academic year (see page 4 for more about Gilson).



Signs Call for Papers: Displacement

Signs invites submissions for a special issue titled "**Displacement**," slated for publication in Spring 2018. *Signs* seeks submissions reflecting multifaceted, innovative, and interdisciplinary approaches to the question of displacement, as well as the potential for attention to displacement to address and transform central questions in feminist theory, including how feminists approach larger questions of space, place, and subjectivity. Pieces that critically examine or call into question distinctions between migrants, refugees, and internally displaced persons are also welcome. The deadline for submissions is September 15. **Serena Parekh**, Associate Professor of Philosophy at Northeastern, and **Denise Horn**, Assistant Professor of Political Science and International Relations at Simmons College, will serve as guest editors for the issue. The full call for papers and how to submit can be found at signsjournal.org.



WGSS Annual Symposium: Sex, Gender, and the Carceral State

On March 18, Northeastern WGSS hosted its third annual Women's History Month symposium, **"Sex, Gender, and the Carceral State,"** our most popular symposium to date. Over 120 people attended the event, which was held in the Cabral Center at the John D. O'Bryant African American Institute. The theme arose from the Humanities Center-sponsored Collaborative Research Cluster on Sex, Gender, and the Carceral. Panels throughout the day addressed topics such as the history and context of the carceral state, profiling and incarceration, incarceration and occupation, social movements and alternatives, and concluded with a roundtable of all panelists and facilitators. Panelists represented academics and activists in dialogue with one another, which resulted in fruitful discussion throughout the day. We were honored to have **Mimi Kim** (California State University, Long Beach), **Jessica Pliley** (Texas State University), **Allegra McLeod** (Georgetown University), **Frederick Ginyard** (FIERCE), **Monica Jones** (Activist and Advocate), **Shannon Erwin** (Muslim Justice League), **Gabriel Arkles** (Northeastern University), **Amahl Bishara** (Tufts University), **Jill McCorkel** (Villanova University), **Jason Lydon** (Black & Pink), **Chase Strangio** (ACLU LGBT & HIV Project), and **Andrea Ritchie** (Soros Justice Fellow). We are grateful to all the panelists, facilitators, and guests who attended and contributed to the discussion. Special thanks are due to **Aziza Ahmed**, **Libby Adler**, and **Gabriel Arkles**, all of the **School of Law**, for their work heading up the planning efforts; the **Northeastern Humanities Center** for sponsoring the collaborative research cluster as well as providing special event funding, and to our co-sponsors: the School of Law, and the Departments of English, History, Philosophy & Religion, Criminology & Criminal Justice, and Sociology & Anthropology.



Photos by Jarvis Chen

Meet the 2016-2017 Visiting Scholars

Each year Northeastern welcomes one or more visiting scholars to residence at the university. These scholars represent academics who are well-established in their field as well as those who are just starting out and finishing their dissertations. This Fall, we have three visiting scholars joining our community. Meet them and learn more about their work below. Please feel free to reach out to these scholars during their time at Northeastern.

Rachel Brown is a PhD candidate in the Political Science program at the **Graduate Center, CUNY**. Her research brings together the subjects of gender, carework, and migration with research on race, labor, and citizenship in Israel/Palestine. Her dissertation, **“The Emotional Politics of Migrations: Migrant Domestic Work in Israel/Palestine,”** looks at how the migrant domestic worker/citizen-employer relationship is shaped by gendered, sexualized, and racialized division of household labor. During her time at NEU, she will be working to develop this dissertation into a book manuscript.



Erinn Cuniff Gilson is an associate professor in the Department of Philosophy and Religious Studies at the **University of North Florida**. She is trained in the field of Continental philosophy and her current research project focuses on the idea of vulnerability—which is often identified with femininity. Her work challenges the way we imagine “vulnerability” as a simple sign of weakness and therefore something that can – and should be – avoided. During her time at NEU, her main project will analyze how responsibility is conceived and practiced in relation to sexual assault, looking in particular at colleges and universities and the sorts of policies they may adopt in response to the problem.

Leanne Trapedo Sims is a recent graduate in American Studies from the **University of Hawai‘i at Mānoa**, where she also served as an instructor. In recent years, she has also worked as a creative writing instructor at the Women’s Correctional Community Center (WCCC) in Honolulu, which is the sole women’s prison in the state. Her time at the Center provided research for her dissertation, **“Hawai‘i’s Women’s Prison: The Role of the Kailua Prison Writing Project and the Prison Monologues as Expressive Pu‘uhonua.”** Her work looks at performances of healing within the WCCC, bringing up important questions of location and indigenous incarceration, and aims to move past the delegitimizing of women’s prison writing. During her time at NEU, she will be working to turn her dissertation into a book.



Signs Graduate Assistants

The *Signs* graduate assistants work closely with journal staff on daily journal operations and special projects. These GAs will be with the journal for the 2016-2017 academic year.

Jackie Gronau

is a third year doctoral candidate in History



specializing in women and gender in the French Empire and modern European history. This is her second year with the journal, and she is excited to continue working on the Feminist Public Intellectuals Project.



Ethel Mickey

is a fifth-year PhD Candidate in the Sociology department.

Her dissertation research is a case study of high-tech firms in Boston, exploring the gendered practices and strategies of networking in the field of technology. Before coming to Northeastern, she went to Vanderbilt University, where she majored in English Literature and Sociology.

Sarah Payne

is a fifth-year PhD candidate in the English department.



Her research interests are literary modernism, early 20th century American and Southern literature, and interracial literature. Her work is influenced by feminist theories such as intersectionality, anti-racism, and performativity. Before coming to Northeastern, she received her BA in English from Boston University.

Fall Courses

WGSS & Cross-Listed Courses

WMNS 1103

Introduction to WGSS
Professor Moya Bailey

WMNS/HIST/AFAM 1225

Gender, Race, and Medicine
Professor Moya Bailey

WMNS/POLS/SOCL 3100

Gender, Social Justice, and Transnational Activism
Instructor: Firuzeh Shokooh Valle

WMNS 6100

Theorizing Gender and Sexuality
Professor Suzanna Walters

CINE/WMNS 3392

Gender and Film
Professor Anne Fleche

COMM/WMNS 2304

Communication and Gender
Instructors: Amy Barber and Jessica Speed Wiley (3 sections)

CRIM/WMNS 4010

Gender, Crime, and Justice
Professor Ekaterina Botchkovar

SOCL/WMNS 1260

Gender in a Changing Society
Professor Kathrin Zippel

SOCL/WMNS 4520

Race, Class, and Gender
Professor Chris Chambers

SOCL/WMNS 4523

Sexualities
Professor Chris Chambers

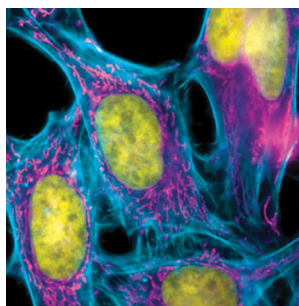
Affiliated Electives

COMM 1131

Sex, Relationships, and Communication
Professor Joseph Schwartz

WGSS Courses Fall 2016

Gender, Race, and Medicine (WMNS/HIST/AFAM 1225)



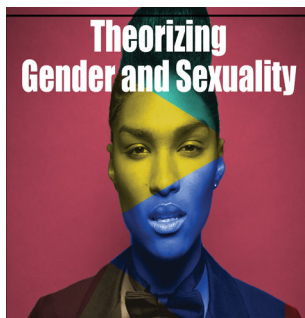
WGSS will offer a new course with newly hired WGSS and Cultures, Societies, and Global Studies faculty member **Moya Bailey**. The course is cross-listed among the WGSS program and the departments of History and CSGS/African American Studies and will examine foundational scientific ideas about race, sex, and gender and what these have meant for marginalized groups in society, particularly when they seek medical care. The course fulfills the core comparative study of cultures and core social science level 1 and has the NUPath attribute of Differences & Diversity.

Gender, Social Justice, and Transnational Activism (WMNS/SOCL/POLS 3100)

This new course will be taught by instructor **Firuzeh Shokooh Valle**. It is cross-listed among the WGSS program and the departments of Political Science and Sociology & Anthropology. The course will examine key issues, themes, and debates in feminist transnational theory, practice, and activism in contemporary contexts and how it has changed under socioeconomic, political, and cultural processes of globalization. The course fulfills NUPath attributes of Differences & Diversity and Societies & Institutions as well as a comparative study of cultures.



Theorizing Gender and Sexuality (WMNS 6100)



Graduate students interested in pursuing a certificate in WGSS should take note: Theorizing Gender and Sexuality (WMNS 6100) will be taught by Professor **Suzanna Walters** this fall. This is one of the required core courses for the certificate and is a deeply interdisciplinary course that students from all departments will find engaging and enlightening. It will open new ways of thinking and learning that can be applied to the student's home discipline and provides interdisciplinary connection to other fields as well. A few spots still remain; don't miss this opportunity!

WGSS Certificate Track for MPH Students

WGSS partnered with Bouvé College of Health Sciences to create a track for Masters of Public Health students to earn their certificate in WGSS. MPH students will apply theories, concepts, and methods gained from the WGSS certificate to addressing urban health issues. Students enrolled in the MPH program will have a slightly different course track than WGSS certificate students in other departments and should contact WGSS executive committee member Professor **Alisa Lincoln** (al.lincoln@northeastern.edu) if they are interested in learning more. Details can also be found on our website at www.northeastern.edu/cssh/wgss/graduate/certificate/wgss-certificate-mp-h-track/.

WGSS Courses Spring 2017

Sexuality, Gender, and the Law (WMNS/PHIL 3500)



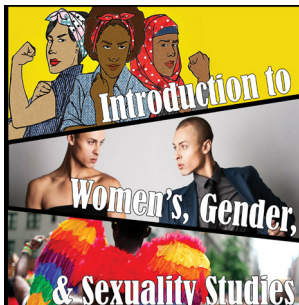
This course was offered for the first time last spring and will run again this coming spring with Professor **Libby Adler** of the School of Law. The course is taught seminar style and examines the legal regulation of gender and sexuality. This is a can't-miss for legal buffs, pre-law students, and anyone interested in how the State is involved in the legal regulation and the rights of women and sexual minorities. The course counts towards the WGSS minor, the Philosophy major, the PPE major, and the Law and Public Policy minor, and also fulfills the NUPath attributes for Ethical Reasoning and Societies & Institutions.

Gender and Reproductive Justice (WMNS/HIST 2303)

This new course will be offered for the first time in Spring 2017 with instructor **Margot Abels**. It will focus on the social, legal, and economic barriers to accessing reproductive health care domestically and internationally, drawing on theoretical and analytical tools including critical race theory, sociology of science, human rights, and feminist theory. The course will count as a core requirement for the comparative study of cultures and will have the NUPath attributes of Engaging Difference & Diversity and Understanding Societies & Institutions.



Introduction to WGSS (WMNS 1103)



We will also be offering Introduction to WGSS in Spring 2017 with Professor **Laura Green** of the English department. This course is the key required course for all WGSS minors and we encourage students to take it as soon as possible, as it serves as a solid foundation for all other affiliated electives and courses in the program. The intro course counts as a core comparative study of cultures course and a level one humanities course and has the NUPath attributes of Engaging Difference & Diversity and Understanding Societies & Institutions.

Tip of the Feminist Hat

Tenure & Promotion

WGSS extends a tip of the feminist hat to our affiliated faculty on their tenure and promotions:

Aziza Ahmed, School of Law, received tenure
Linda Blum, Department of Sociology, promoted to full professor
Alisa Lincoln, Department of Sociology & Bouvé College of Health Sciences, promoted to full professor

WGSS Faculty Publications

In the past year, our faculty have published on a wide variety of topics in a variety of sources. Below is a list of selected publications by WGSS affiliated faculty. Congratulations to you all!

Aziza Ahmed

- "Adjudicating Risk: AIDS, Crime, and Culpability," *Wisconsin Law Review*, 2016
- "Medical Evidence and Expertise in Abortion Jurisprudence," *American Journal of Law & Medicine*, 2015

Moya Bailey

- "When Margins Become Centered: Black Queer Women in Front and Outside of the Classroom," *Feminist Formations*, 2016
- "#transform(ing) DH Writing and Research: An Autoethnography of Digital Humanities and Feminist Ethics," *Digital Humanities Quarterly*, 2015
- "Redefining Representation: Black Trans and Queer Women's Digital Media Production," *Screen Bodies*, 2016

Linda Blum

- *Raising Generation Rx: Mothering Kids with Invisible Disabilities in an Age of Inequality*, New York University Press, 2015.

Sarah Jackson and Brooke Foucault Welles

- "#Perguson is Everywhere: Initiators in emerging counterpublic networks," *Information, Communication & Society*, 2015

Rachel Rosenbloom

- "Policing Sex, Policing Immigrants: What Crimmigration's Past Can Tell Us About Its Present and Its Future," *California Law Review*, 2016

Feminist Brown Bag Lunch Sessions

This Fall, WGSS invites all feminist faculty to join us for informal brown bag lunch sessions in 270 Holmes Hall, the WGSS conference room. This is an opportunity to connect with faculty and visiting scholars in an informal, fun way and to unwind from the chaos of the semester among feminist colleagues. Bring your lunch and chat!

Save the following dates:

Monday, October 3, 12 -1 pm

Wednesday, November 2, 12-1 pm

270 Holmes Hall, WGSS Conference Room

Spring and Summer 2016 Events

Women Take the Reel Film Festival

The Women Take the Reel film festival, a roving film festival that is an initiative of the Graduate Consortium of Women's Studies, took place in March 2016. Northeastern screened *She's Beautiful When She's Angry* and hosted a panel discussion with the co-founders of OUR BODIES OURSELVES. 2016 was also the first year that the GCWS hosted a kick-off event with all nine consortium schools, which opened the festival with a screening of *Black Men Dream* by Shikeith and a discussion with the filmmaker, a musical performance by Castle of our Skins (Seychelle Dunn on saxophone and Adrienne Baker on flute), and slam poetry performed by Lenelle Moise.

Other Spring 2016 Events

The WGSS program also hosted talks with Professor Josh Gamson of the University of San Francisco and Visiting Scholars Miriam Tola and Stu Marvel.

The Sex Myth

This summer, CAMD student and WGSS minor **Hanne Larsen** developed a performance piece based on Rachel Hills' book *The Sex Myth*. The production had several well-attended performances on campus and was funded by an educational grant from the Provost's office. Larsen was inspired by attending a talk that WGSS hosted last fall with Rachel Hills on her book. The final performance piece took the real-life stories of ensemble members to create a narrative surrounding attitudes towards sex at Northeastern and in the lives of its students. Keep an eye out, as Larsen and her ensemble may find new opportunities to perform their work this fall!

Upcoming Events

Fall 2016

Gender, Race, and the 2016 Election

October 6, 7:00 pm

Location TBD

Visiting Scholar Lunchtime Lecture

Erinn Cuniff Gilson, University of North Florida

WGSS Visiting Scholar, 2016-2017

October 12, 12:00 pm

270 Holmes Hall, WGSS Conference Room



Visiting Scholar Lunchtime Lecture, Transnational Solidarity and Migrant Domestic Work: The Case of Israel/Palestine



Rachel Brown, Graduate Center at City University
of New York

WGSS Visiting Scholar 2016-2017

Date TBD

270 Holmes Hall, WGSS Conference Room

Barrs Lecture, Imani Perry "Feminist Ethics and the Passionate Utterance"

November 17, 4:30 pm

Location TBD

Spring 2017

The Future of Global Reproduction: Technology, Law, Religion, Art

March 17, 9:00 am – 5:30 pm

Cabral Center at the John D. O'Bryant African American Institute

Save the date for the 2017 women's history month symposium.

Peggy Orenstein, "Girls & Sex: Navigating from Shame and Regret to Integrity and Joy"

March 29, 10:30 am – 12:00 pm

Curry Student Center, Rm. 318-322



Graduate Consortium in Women's Studies Feminisms Unbound Series

All events held on MIT's campus. Details can be found at mit.edu/gcws/.

Black Women and the Carceral State

September 14, 5:30-7:30 pm

Sexual Collisions: Reflections on Empire, Terror, and Violence

October 26, 5:30-7:30 pm

Trans/Multi/Mediations

February 15, 5:30-7:30 pm

Graduate Student Roundtable

April 12, 5:30 - 7:30 pm

