

## ◆ Director's Welcome ◆



Welcome back to campus, Feminists! The fall semester was exciting for WGSS as we finalized the details of our Spring Symposium, “**Feminist Foundations, Feminist Futures: Celebrating Signs at 50**” and worked on our Tier One grant, the Reproductive Justice Research Collaborative (RJRC). The **RJRC** has begun interviewing abortion and RJ advocacy groups in Boston and Oakland and will host a workshop for group leadership and the academic team in April on the Mills campus. We are excited about the possibilities this might open up. As for the Symposium, we have an incredible line-up of speakers, all of whom have published in *Signs* previously, whether in the journal itself or the open-access Feminist Public Intellectuals Project. You can read more about the symposium on page 4.

Furthermore, our classes continue to fill with incredible feminist students from across the Boston campus, a trend we hope to see continue (see our Fall 2024 courses on pages 5-7).

On a personal note, I am preparing to take a year-long sabbatical beginning in July. To that end, I wanted to take a moment to introduce **Professor Libby Adler** (Law, WGSS), who will serve as Acting Program Director from July 2024 – June 2025. Libby has served on the WGSS executive committee since 2012. In 2017, we successfully moved 25% of her appointment into WGSS, the first faculty to be jointly appointed with the Law School and CSSH. She has written extensively on sexuality, gender, family, and children, including foster care, and draws heavily from queer and critical theory. Her book, *Gay Prior: A Queer Critical Legal Studies Approach to Law Reform*, was published in 2018 by Duke University Press. She is also the co-editor of the casebook *Mary Joe Frug's Women and the Law* (4th ed.) and has written about contemporary legal issues arising out of Nazism. Libby holds a JD from Northeastern University and an LLM from Harvard University. The WGSS community is lucky to have her step in to cover program direction for the 2024-2025 academic year. Join me in welcoming Libby to this role!

As if you needed a reminder, 2024 is a presidential election year, and so much hangs in the balance. Civil liberty, bodily autonomy, and democracy itself are at stake, so stay engaged and do what you can to engage others in this fight. When we fight, we win.

In solidarity and sisterhood –  
Suzanna Walters  
Program Director, WGSS

Click the picture to visit our website!

Northeastern University • CSSH

Women's, Gender, and  
Sexuality Studies Program





**LISA ARELLANO**  
VISITING SCHOLAR

Lisa is a Visiting Professor at the Mills Campus. She has always had an interest in interdisciplinary work and Women, Gender, and Sexuality Studies allows her to combine both History and theory. She now focuses on social movement histories, particularly on understanding how identity formation and expression change.

She is currently finishing a new piece about a Bay Area community archive that centralizes the lives of lesbians of color (BALA). Some of her favorite work has been published in Queer Pasts, a digital project where she worked as a co-editor.

For many years, she was an Associate Professor and Program Director in Women's, Gender, and Sexuality Studies at Colby College in Maine. She has now returned to her home in the Bay Area and connected with the community in Boston through Mills.



**GRACE MAHON**

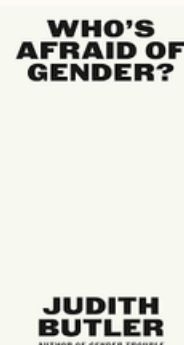
WGSS AND SIGNS CO-OP

Grace is currently a second year undergraduate student studying English with a minor in Media and Screen Studies. She is interested in the intersection of feminism and sexuality within the Film and Art industry.

## SIGNS Updates!

**Call For Papers - 2025 Catharine Stimpson Prize for Outstanding Feminist Scholarship.** The prize-winning paper will be published in *Signs*, and the author receives an honorarium of \$1000. Feminist scholars in the early years of their careers are invited to submit their papers. Deadline for submission: **May 1st, 2024**

**Short Takes** - Verónica Gago, Clare Hemmings, Rafia Zakaria, and Julia Serano write commentaries on Judith Butler's new book *Who's Afraid of Gender?*



# ✦ Spring 2024 Events ✦

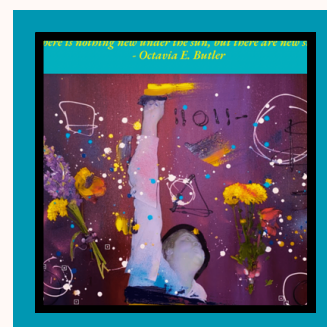
**February 2, 10:00 am- 5:00 pm**

## **bell hooks Symposium**

**East Village Rm 17**

The 3rd Annual bell hooks symposium was presented by Northeastern's Africana Studies program. The symposium honors the life and legacy of the trailblazing Black feminist scholar bell hooks (1952-2021). You can watch a recording of the event at

<https://packnetwork.com/blackfeministworldmaking/>



**February 6, 6:30 pm**

## **Sexual Pedagogies and Social Justice**

**Zoom**

This event is held by the GCWS with a panel of scholars, activists, and artists, to discuss the relationship between sexuality education and social justice, as a part of their Feminisms Unbound speaker series. Registration is free but required. Learn more about the panelists and the event on the WGSS events page.

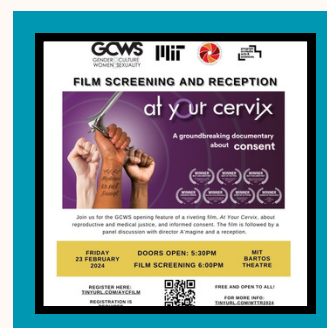


**February 23, 6:00 pm**

## **At Your Cervix- Film Screening**

**MIT Bartos Theater**

A screening of the groundbreaking documentary At Your Cervix, followed by a panel discussion with the director A'magine, and a light reception afterward. At Your Cervix breaks the silence about how medical students learn to perform pelvic exams. Following filmmaker and sexuality educator, A'magine, the film exposes how students are often taught on unconscious patients without their knowledge or consent. Registration is required. Learn more about the event on the WGSS events page.

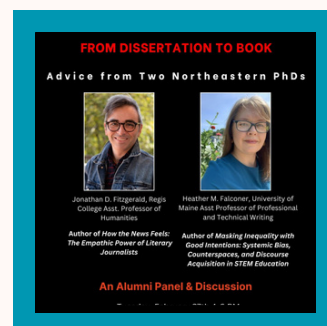


**February 27, 4:00 pm- 6:00 pm**

## **From Dissertation to Book**

**909 Renaissance Park**

On Tuesday, February 27, 4:00-6:00 pm, two Northeastern PhD Alumni give their advice through a discussion panel. Jonathan D. Fitzgerald, Regis College Asst. Professor of Humanities, and Heather M. Falconer, University of Maine Asst. Professor of Professional and Technical Writing.



# WGSS 2024 Women's History Month Symposium

PAGE 4

## **FEMINIST FOUNDATIONS, FEMINIST FUTURES: CELEBRATING SIGNS AT 50 FRIDAY, MARCH 15, 2024, 9:00 AM-4:30 PM CABRAL CENTER**

This March, Northeastern WGSS will celebrate Women's History Month by hosting its annual symposium. 2024 marks the tenth WGSS symposium! This hallmark coincides with another anniversary: fifty years of publishing the feminist journal *Signs: Journal of Women in Culture and Society*. *Signs* has been under the editorship of Suzanna Danuta Walters, WGSS program director, since January of 2015. To commemorate a half-century of feminist publishing, the March 2024 symposium will celebrate the anniversary. "Feminist Foundations, Feminist Futures: Celebrating Signs at 50" will be held Friday, March 15, beginning at 9:00 am in the Cabral Center on the Boston campus.

*Signs* was founded in 1975 as part of an emergent tradition of feminist scholarship and has been publishing continuously ever since, establishing itself as a preeminent journal in the field of women's, gender, and sexuality studies. At the time of the journal's founding, its editorial staff sought to raise consciousness and develop theories about women's oppression in both academic disciplines and society more broadly. The journal has consistently strived for intellectual nuance and robust interdisciplinarity, engaging with questions of concern to academics and activists. To honor half a century of publication, our fiftieth-anniversary celebration aims to think big. This symposium addresses persistent conundrums and theoretical throughlines that have shaped our field for over half a century. Over the course of four roundtables (emphasizing discussion and dialogue), panelists will engage the continuing power of feminist theory, always cognizant of our own contested histories and imagined futures. All panelists have published in the journal or its open-access arm, the Feminist Public Intellectuals Project.

**FEATURING**

Marice Bianco  
Lorna Bracewell  
Mary Anne Case  
Soraya Chemaly  
Breanne Fahs  
Beverly Guy-Sheftall  
Sophie Lewis  
Treva B. Lindsey  
Chandra Talpade Mohanty  
Sherie Randolph  
Salamishah Tillet  
Jane Ward  
Andi Zeisler

Open to the public

Free registration required

**FEMINIST FOUNDATIONS  
FEMINIST FUTURES  
Celebrating SIGNS at 50**

**10th Annual Northeastern Women's  
History Month Symposium**

**March 15, 2024 | Cabral Center | 9am - 4:30 pm**

Presented by the Northeastern University Program in Women's,  
Gender, and Sexuality Studies and *Signs: Journal of Women in  
Culture and Society*

Co-sponsored by: the Northeastern Humanities Center; School of Law; the Departments of Cultures,  
Societies, and Global Studies; English, History, Philosophy & Religion; Political Science; and Sociology  
& Anthropology; and the Programs in Africana Studies, Human Services, and International Affairs

Registration is free and open to the public, but space is limited. Be sure to reserve your spot by registering for the event at <https://signsat50symposium.eventbrite.com>.

Read more about the panels and panelists on our website, <https://cssh.northeastern.edu/wgss/annual-symposium/>.

**We hope to see you there!**

# SIGNS



# Fall 2024 Courses

TAKE A SNEAK PEAK AT WGSS'S FALL 2024 COURSES!

## WMNS 1103: Intro to WGSS

### MWR, 10:30-11:35 - Professor Lauren Savit

Offers an interdisciplinary course introducing key themes in gender and sexuality studies. Offers students an opportunity to learn core concepts that inform our understanding of how gender and sexuality are socially constructed and are experienced in everyday life. Drawing on women's studies, queer studies, masculinity studies, and allied areas, the course analyzes gender, sexuality, and other dimensions of identity; explores critical issues of gender, sex, and power; and studies gendered/sexed identities in both national and transnational contexts. Topics include the gendered conceptions of love, sexuality, and violence; biological arguments about gender and sexuality; the social construction of sexuality and gender; intersections of gender, race, class, and sexuality; masculinities and femininities; theories of sexual difference; gender and the state; and gender and popular culture.

**Attribute(s):** NUPath Difference/Diversity, NUPath Societies/Institutions



## WMNS/HIST/AFCS 1225

### Gender, Race, and Medicine

### TF, 1:35-3:15 - Professor Margot Abels

Examines the basic tenets of "scientific objectivity" and foundational scientific ideas about race, sex, and gender and what these have meant for marginalized groups in society, particularly when they seek medical care. Introduces feminist science theories ranging from linguistic metaphors of the immune system to the medicalization of race, to critiques of the sexual binary. Emphasizes contemporary as well as historical moments to trace the evolution of "scientific truth" and its impact on the U.S. cultural landscape. Offers students an opportunity to develop the skills to critically question what they "know" about science and the scientific process and revisit their disciplinary training as a site for critical analysis. [AFAM 1225](#), [HIST 1225](#), and [WMNS 1225](#) are cross-listed.

**Attribute(s):** NUPath Difference/Diversity



## WMNS/HIST/SOCL 2303

### Gender & Reproductive Justice

### TF, 9:50-11:30 - Professor Margot Abels

Introduces the social, legal, and economic barriers to accessing reproductive healthcare domestically and internationally. Draws on various theoretical and analytic tools including critical race theory, critical legal theory, sociology of science, human rights, feminist theory, and a range of public health methods. Access to reproductive health services, including abortion, is one of the most contested political, social, cultural, and religious issues today. Covers domestic, regional, and international legal and regulatory frameworks on sexual reproductive health. [HIST 2303](#), [SOCL 2303](#), and [WMNS 2303](#) are cross-listed.

**Attribute(s):** NUPath Difference/Diversity, NUPath Societies/Institutions





## WMNS/AFCS 2325: Black Feminist Studies

### MR, 11:45-1:25 - Professor Régine Jean-Charles

Invites students to study the history and contemporary landscape of Black feminist scholarship. Covers a range of disciplines and historical periods to introduce students to important texts and theoretical developments in this vast and interdisciplinary field.

**Prerequisite(s):** ENGW 1102 (may be taken concurrently) with a minimum grade of C or ENGW 1111 (may be taken concurrently) with a minimum grade of C or ENGW 1113 (may be taken concurrently) with a minimum grade of C or ENGW 1114 (may be taken concurrently) with a minimum grade of C

**Attribute(s):** NUPATH Difference/Diversity, NUPATH Societies/Institutions

## WMNS/MSCR 2505: Digital Feminism

### MW, 2:50-4:30 - Professor Lauren Savit

Explores the unique ways that feminist activism and theory are impacted by the increasing digital nature of our world. From hashtags to Tumblr, feminists are using digital tools and platforms to aid in the pursuit of social justice. Offers students an opportunity to develop a timeline that traces feminists' engagement with the Internet, new media, and technological innovations from the late seventies to the present. Examines the strengths and challenges that the digital world creates for feminist engagement. MSCR 2505 and WMNS 2505 are cross-listed.

**Attribute(s):** NUPATH Creative Express/Innov, NUPATH Interpreting Culture, NUPATH Writing Intensive



## WMNS/ANTH/SOCL 3100

### Gender, Social Justice, and Transnational Activism

### T, 11:45-1:25, R, 2:50-4:30 - Professor Layla Brown

Introduces key issues, themes, and debates in feminist transnational theory, practice, and activism in contemporary contexts and how it has changed under socioeconomic, political, and cultural processes of globalization. Examines differences among women relating to race, class, sexuality, national identity, and political economy in reckoning with possibilities for sustainable social justice. Students interrogate the relationship between the local and global; the production of knowledge in different regional spaces; the pragmatics of political mobilization; the varying contours of "social justice"; and other key issues. Offers students an opportunity to discuss the impact of globalization, neoliberalism, and state and intimate violence on gendered politics and relations and to contend with the politics of difference, to debate its challenges, and to imagine possible futures for transnational gender justice.

**Attribute(s):** NUPATH Difference/Diversity, NUPATH Societies/Institutions



# Graduate Course

## Dissertation Workshop at the GCWS Professor Carla Kaplan

This workshop is designed for feminist dissertators from all disciplines and at all stages of the dissertation process. We will combine theories of interdisciplinarity and intersectionality as well as histories of academic writing and its protocols (as well as its secret rules) with practical instruction on how to become better/more comfortable writers and get more writing done. Readings, which will also cover important related topics such as balancing writing and activism, the racial, sexual and gender politics of the academy, the politics of acknowledgement, feminist voice, women's anger, and self-care. Participants will be asked to help lead discussions and make short presentations on their ongoing work and writing activities, as well as to keep a writing journal. Participants will also be encouraged to take at least one writing retreat each semester. Over the course of the year, we will provide guidance on preparing publications, presenting conference papers, and the academic (and non-academic) job market.

The Dissertation Workshop is designed to serve the needs of its participants. Hence, the syllabus is a flexible one, open to changes, especially in the second semester, in structure, readings, and assignments. In the first semester we will concentrate our shared writing on the early (sometimes the most difficult) stages of dissertation writing: abstracts or first paragraphs of research proposals. In the spring, we will share full chapters of dissertations. The workshop is open to students at all stages of the dissertation process. The workshop portion of the course will accommodate those in different stages, accordingly.

Meets every other **Wednesday**, students must apply before enrolling. This course will meet over the course of the full academic year.

The GCWS will have 1-2 additional elective courses, Stay tuned for more details!



## S I G N S Graduate Assistant Positions

**Signs: Journal of Women in Culture and Society**, the leading interdisciplinary journal in feminist scholarship, has openings for graduate research assistants. *Signs* has been publishing for 50 years, the last 8 of which have been at Northeastern. The journal receives more than 400 manuscript submissions each year and publishes four issues annually. Graduate assistants work with the Editor-in-Chief, Deputy Editor, and Managing Editor on manuscript acquisition and production and on research related to journal operations, as well as various online initiatives, including the Feminist Public Intellectuals Project (<http://signsjournal.org/feminist-public-intellectuals-project/>).

All graduate assistants will work with the Managing Editor on critical tasks related to production deadlines and acquisitions and with the Deputy Editor on responsibilities related to research projects and online initiatives. Candidates with excellent research, communication, computer, editing, and organizational skills, as well as attention to detail, the ability to work both independently and collaboratively, and the capacity to work flexibly, will be given preference. Preference will also be given to candidates with knowledge of the field of women's and gender studies. Previous office experience, particularly experience handling a range of administrative tasks, is a plus.

Graduate assistants will be paid stipends and benefits, including tuition, per the University guidelines for such positions. Please note that these positions are only for those graduate students holding graduate assistantships for the coming academic year. These positions are for the full academic year and require a commitment of 10 to 20 hours/week (10 hours/week if combined with another RA or TA position, 20 hours/week if a full-time appointment). Two to four candidates will be selected depending on how many hours each candidate can devote to the position. The positions will begin September 2024. Working hours are flexible.

To apply for the 2024-25 academic-year positions, please send a letter of interest accompanied by a CV to Signs Editor-in-Chief, Professor Suzanna Walters ([s.walters@northeastern.edu](mailto:s.walters@northeastern.edu)) and Signs Deputy Editor Andrew Mazzaschi ([a.mazzaschi@northeastern.edu](mailto:a.mazzaschi@northeastern.edu)). Applications for these positions are due on a rolling basis, until the positions are filled, and preference will be given to all applicants who apply by February 22. Please indicate in your letter whether you seek a 10 hour/week position to be combined with an assistantship in another department/program or whether you seek a full 20 hour/week assistantship with *Signs*.